

Road Safety in Winter



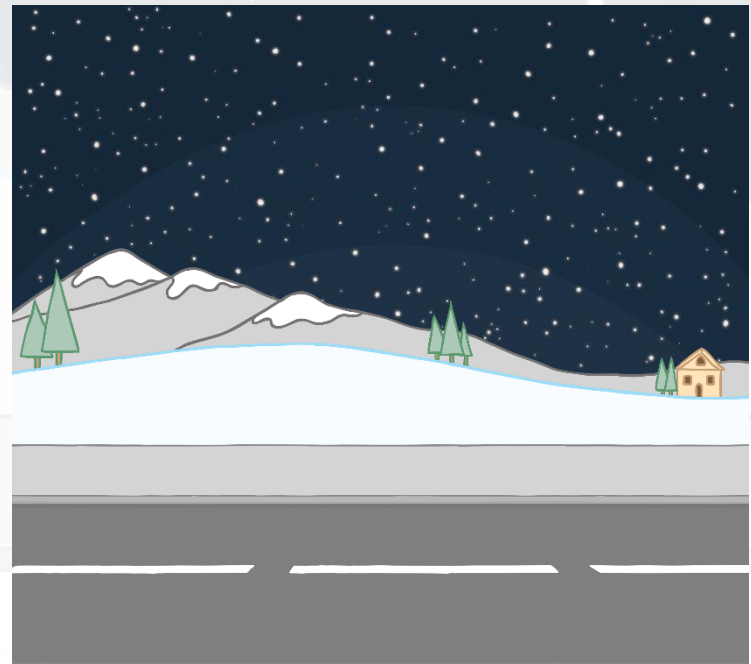
twinkl

Road Safety in Winter

Why do you have to be extra careful walking to school in the winter?



weather



dark mornings and nights

Weather

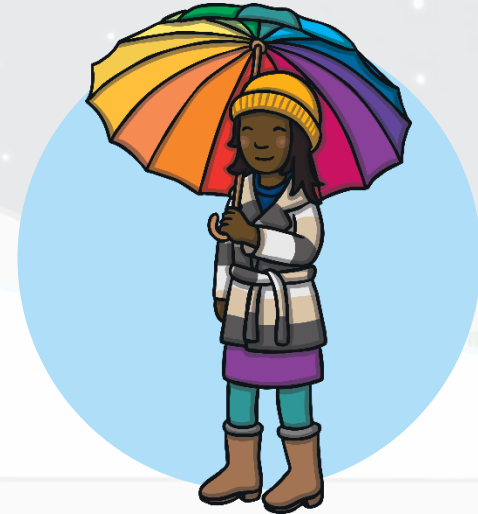
Why does the weather make it dangerous to cross the road?



Pavements around the roads might be slippery. It is important to wear shoes with grips.



People wear hats to keep them cosy and this can stop them from hearing the traffic.



If it is raining or snowing, people use umbrellas or put up their hoods to keep dry. This can block their view.

Be Bright, Be Seen

Why do you have to be extra careful walking to school in the winter?



wear bright clothes

wear reflective clothing

Be Bright, Be Seen

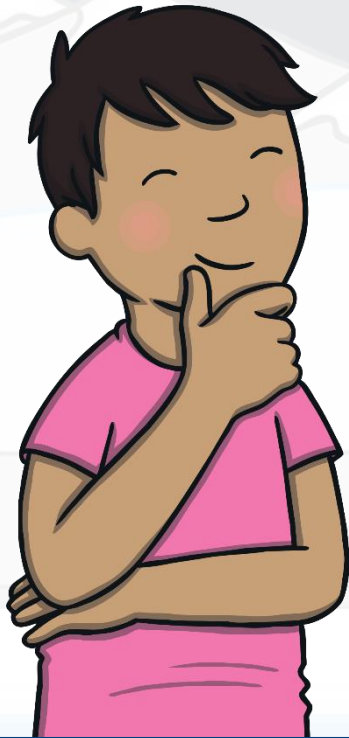


Reflective materials glow brightly when light shines onto them.

Fluorescent clothes show up well during the day and at dusk.

Be Bright, Be Seen

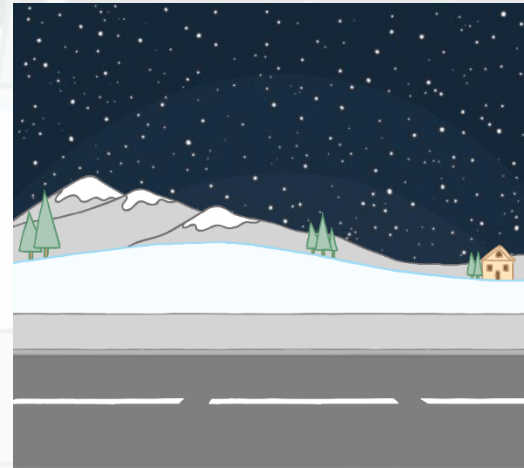
To keep safe at night, it is a good idea to wear clothes that are reflective **and** fluorescent.



Can you think of anyone who wears fluorescent and reflective clothing?

Q1

Name two things that make crossing the road dangerous in winter.



weather

dark mornings
and nights



Q2

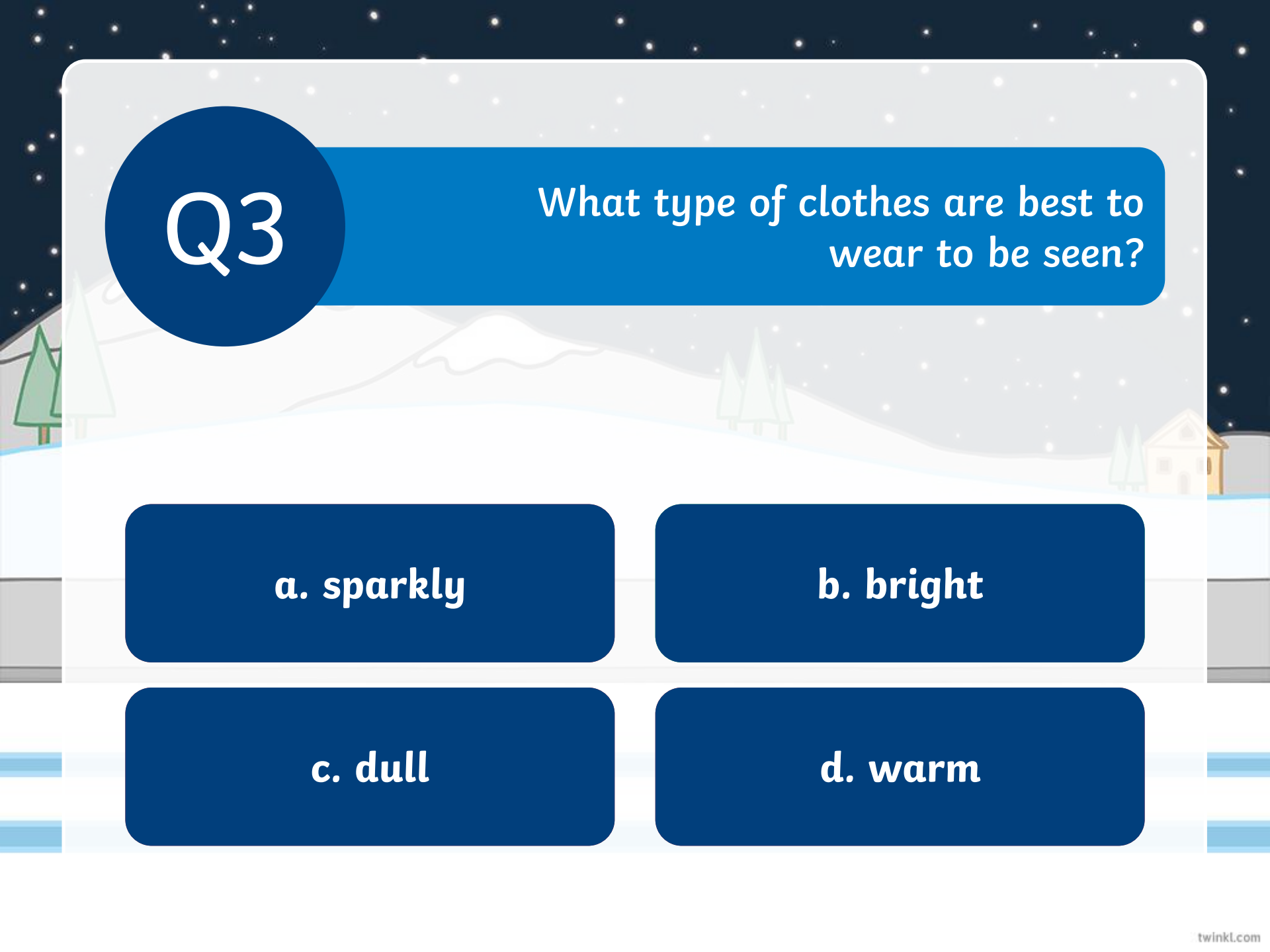
Where is a safe place to cross the road?

**a. next to a
parked car**

**b. near a
roundabout**

c. on a bend

**d. at a zebra
crossing**



Q3

What type of clothes are best to wear to be seen?

a. sparkly

b. bright

c. dull

d. warm

Q4

What name is given to bright clothing?



fluorescent

Q5

Why is it important to wear shoes that grip in the winter?



to stop you slipping next to the road.

Q6

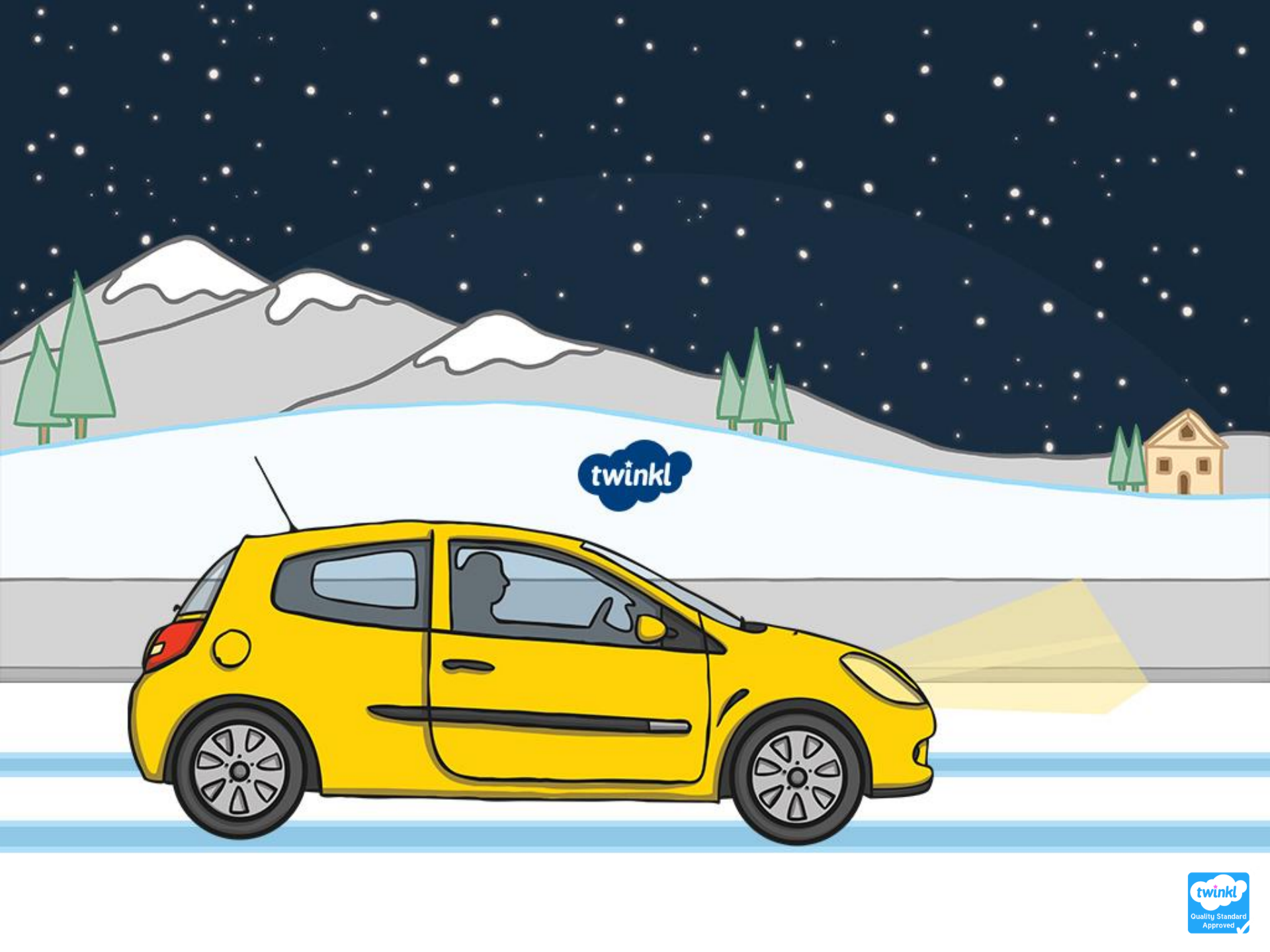
What is special about reflective clothing?



it glows when light hits it

Don't forget! Rudolph saved the day with his bright shiny nose. You should wear bright clothes to Be Seen and Keep Safe too





twinkl